

INSPIRAL



**STAINLESS STEEL
HOSPITAL FURNITURE
2019**

INSPIRAL

STAINLESS STEEL
HOSPITAL FURNITURE



Contents

<i>Emergency Cart</i>	7	<i>Paper Trolley</i>	39
<i>Isolation Cart</i>	8	<i>Open Trolley</i>	39
<i>Anaesthesia Cart</i>	8	<i>Instrument Table</i>	40
<i>Pediatric Cart</i>	9	<i>Equipment Trolley</i>	40
<i>General Cart</i>	10	<i>Nested Tables</i>	41
<i>Minor Surgery Light</i>	12	<i>Dressing Trolley</i>	42
<i>Scrub Sinks</i>	14	<i>Mobile Laundry Basket</i>	42
<i>Brush Holder</i>	16	<i>Medical Waste Trolley</i>	43
<i>Soap and Dispenser</i>	17	<i>Transportation Trolley</i>	43
<i>Paper Dispenser</i>	17	<i>Housekeeping Trolley</i>	44
<i>Modular Medical Cabinet</i>	18	<i>Waste Bins and Kick Bucket</i>	45
<i>Medical Cabinet</i>	20	<i>Bowl Stands</i>	45
<i>Wall Mounted Medical Cabinets</i>	23	<i>Transport Trolley</i>	46
<i>Cabinet with Drawers</i>	24	<i>Instrument Table with Drawer</i>	46
<i>Bronchoscope Endoscope Cabinet</i>	23	<i>Minor Surgery Light</i>	47
<i>Cap, Bonnet and Mask Cabinet</i>	25	<i>Examination Table</i>	48
<i>Mobile Hook Rails</i>	26	<i>Hospital Screens</i>	48
<i>Shelves for Urine Bottles and Slippers</i>	27	<i>IV Stand</i>	49
<i>Basket Hook Trolley</i>	27	<i>Hydraulic Stool</i>	50
<i>Classic Shelves</i>	28	<i>Trommels</i>	51
<i>Shelves</i>	29	<i>Kidney Trays and Bowls</i>	51
<i>Negatoscopes</i>	30	<i>Waste Bin</i>	51
<i>Medicine Cabinets</i>	31	<i>Pass Through Windows</i>	52
<i>Hanger Trolley</i>	31	<i>Cylinder Trolley</i>	52
<i>Ultrasonic Cleaning Unit</i>	32	<i>UV Germicidal Lamp</i>	52
<i>Lighted Inspection Table</i>	34	<i>Slipper Trolley</i>	53
<i>Plaster Table</i>	34	<i>Sitover Bench</i>	53
<i>Instrument Washing Sink</i>	35	<i>Shelf and Starter Kit</i>	54
<i>Baby Washing Table</i>	35	<i>ABS Tray and Dividers</i>	58
<i>Endoscopy Washing and Storage Table</i>	36	<i>Morgue Units</i>	61
<i>Falcate Table</i>	36	<i>Body Washing Table</i>	62
<i>Packaging Table</i>	37	<i>Autopsy Table</i>	62
<i>Mayo Table</i>	38	<i>Rotating Autopsy Table</i>	63
<i>Surgical Instrument Cart</i>	38	<i>Lift for Morgue</i>	63
<i>Paper Trolley</i>	39		







Durability

- Impact and corrosion resistant stainless steel body with easy to clean & safe rounded corners
- Multi-functional drawers with different dimensions
- Separator placed in drawers prevents mix of medicines and presents them in a certain order
- Silent and long lifetime drawer rail system



Mobility

- Medical grade antistatic castors enables smooth and safe mobility
- Handles on both sides enables to move the carts easily



Universal Baskets & Trays

- Modular and productive transportation & storage systems with adjustable
- Universal size aid trays in 400X600 mm dimensions
- 3 different height options compatible with trolley drawers 50 mm, 100 mm and 200 mm



Safety

- Central locking system enables locking of all drawers
- Locking system is designed for disposable plastic locking seals with serial numbers which enables protecting and recording the usage of special equipment and narcotic drugs



Accessory Positioning

- Accessory rails enabling safe positioning of equipment like IV stand, examination lamp used in medicine preparation
- Two-belt oxygen tube holder and 3 L aluminium oxygen tube integrated with trolley
- Defibrillator tray integrated with frame
- Easily accesible CPR tray



Emergency Cart

- Designed for emergency and intensive care areas of the hospitals
- Ideal for keeping all necessary equipment for immediate treatment
- Aluminum main frame and laminated compac drawers
- Stainless steel accessory rails
- Adjustable defibrillator tray integrated to the upper table
- 6 drawers integrated with plastic seperators & baskets
- Integrated cylinder holder, IV stand, stainless steel waste bin and CPR table
- Four pcs 125 mm castors two brake and two electrically conductive
- Central drawer locking system

Article Codes	L (mm)	W (mm)	H (mm)	Explanation
AB10.60	860	520	1060	Six drawers



Isolation Cart

- Aluminum main frame and laminated compact drawers
- Easy to clean surfaces
- Trays are available in 50mm, 100mm and 200mm heights
- Four pcs 125 mm castors two with brake and two electrically conductive
- Accessories: IV pole, glove tray and waste bin

Article Codes	L (mm)	W (mm)	H (mm)	Explanation
AB10.66	860	520	1060	Six drawers



Anesthesia Cart

- Aluminum main frame and laminated compact drawers
- One piece fully welded frame
- Easy to clean surfaces
- Trays are available in 50mm, 100mm and 200mm heights
- Four pcs 125 mm castors two with brake and two electrically conductive
- Accessories: medicine boxes, sharps container

Article Codes	L (mm)	W (mm)	H (mm)	Explanation
AB10.50	860	520	960	Five drawers



Pediatric Cart

- Aluminum main frame and laminated compact drawers
- One piece fully welded frame
- Easy to clean surfaces
- Trays are available in 50mm, 100mm & 200mm sizes
- Four pcs 125 mm castors two with brake and two electrically conductive
- Accessories: sharps container

Article Codes	L (mm)	W (mm)	H (mm)	Explanation
AB10.55	860	520	960	Five drawers



Device Cart

- Aluminum main frame and laminated compact drawers
- 2 drawers, integrated plastic separators & baskets in drawers
- Four pcs 125 mm castors two with brake and two electrically conductive

Article Codes	L (mm)	W (mm)	H (mm)	Explanation
AB20.20	860	520	960	Two drawers



AB20.60

General Cart

- Aluminum main frame and laminated compact drawers
- 5 and 6 drawers, integrated plastic separators & baskets in drawers
- Easily accessible CPR tray
- Four pcs 125 mm castors two with brake and two electrically conductive

Article Codes	L (mm)	W (mm)	H (mm)	Explanation
AB20.50	860	520	960	Five drawers
AB20.60	860	520	1060	Six drawers



AB20.50



Medicine Cart

- Aluminum rigid main frame
- 8 rows of lockable medication drawers
- Total 40 pcs (AB40.40) or 32 pcs (AB40.32) medication drawers
- Adjustable medication drawer separators enable modular and efficient usage
- Central locking system
- Stainless steel and powder coated alternatives
- Four pieces 125 mm castors two with brake and two electrically conductive

Article Codes	L (mm)	W (mm)	H (mm)	Explanation
AB40.32	670	510	1060	32 unit dose
AB40.40	670	510	1060	40 unit dose





Isolation Cart

- Aluminum main frame and laminated compact drawers
- 9 drawers, integrated plastic separators & baskets in drawers
- Four pcs 125 mm castors two with brake and two electrically conductive

Article Codes	L (mm)	W (mm)	H (mm)	Explanation
AB20.90	780	520	1800	Nine drawers



Endoscope Cart

- Users can organize small instruments easily thanks to the 24 different sections formed by separators
- Stock control possibility at any moment thanks to the glass doors
- In the full cabinet, there are;
 - 6 pcs ABS basket in the dimensions of 600x400x200 mm
 - 4 pcs ABS tray in the dimensions of 600x400x100 mm
 - 6 pcs ABS tray in the dimensions of 600x400x50 mm
- There is a shelf divider in each basket and tray which divides both horizontal and vertical.
- Four pcs 125 mm castors two with brake and two electrically conductive

Article Codes	L (mm)	W (mm)	H (mm)	Explanation
AB30.00	780	520	1700	Full
AB30.01	780	520	1700	Null



SK60.30



SK60.10

Scrub Sinks

- Made of AISI 304 stainless steel designed to be used by the surgery team for hand and nail cleaning before entering the sterile zone
- Photocell display screen that shows the temperature and duration of water alternatively from each faucet
- Specially designed with round concave corners, easy to clean and antibacterial material considering the areas of use & user's requests and to be compatible with international hygienic norms
- Photocell and knee controlled water flow and knee controlled soap flow at each station
- Thermostatic mixing valve for cold and hot water

Article Codes	L (mm)	W (mm)	H (mm)	Explanation
SK60.10	800	635	1180	Single
SK60.20	1600	635	1180	Double
SK60.30	2200	635	1180	Triple



Water temperature and timer can be monitored on LCD display

SK60.20



Faucets

- Water and soap faucets are designed to keep hand sanitation
- High grade chrome plating for long life span
- Equipped with water saver

Sink

- Designed to prevent splash during washing
- Easy to clean, hygienic surfaces



Water temperature and timer can be monitored on LCD display

Scrub Sinks

- Antibacterial acrylic sink surface designed to be used by surgery team for hand and nail cleaning before entering the zone.
- Photocell display screen that shows the temperature and duration of water alternatively from each faucet
- Design compatible with international hygienic norms by considering areas of use and user's expectations
- Thermostatic mixing valve for cold and hot water
- Photocell and manually controlled water flow options
- Made of AISI 304 stainless steel

Article Codes	L (mm)	W (mm)	H (mm)	Explanation
SK90.01	700	790	660	Single, Photocell
SK90.11	700	790	660	Single Manual
SK90.02	700	1500	660	Double, Photocell
SK90.12	700	1500	660	Double, Manual



Scrub Sinks

- Made of AISI 304 stainless steel
- Wall mounted scrub sink
- 200 mm sink depth
- Drain trap included
- Additional accessories mounted to the wall available: Water taps, soap and disinfectant dispensers, brush dispensers and paper towel dispensers

Article Codes	L (mm)	W (mm)	H (mm)	Explanation	
SK70.10	800	520	450	Single	Faucet mounted on sink
SK70.20	1600	520	450	Double	
SK70.30	2200	520	450	Triple	
SK71.10	800	520	450	Single	Faucet mounted on wall (w/o faucet)
SK71.20	1600	520	450	Double	
SK71.30	2200	520	450	Triple	



Scrub Sinks

- Made of AISI 304 stainless steel
- Compact, wall mounted design
- Specially designed button enables user to start flow without hand touch

Article Codes	L (mm)	W (mm)	H (mm)
SK71.30	450	500	240



Mobil Scrub Sinks

- Made of AISI 304 stainless steel and MDF.
- Clean water and dirty water tanks
- Independent usage with battery operated pumps
- Integrated soap dispenser
- Easy to move with four castors

Article Codes	L (mm)	W (mm)	H (mm)
SK90.10	430	450	1150



Brush Holder

- Dispenser for keeping disposable brushes
- Three channel body made of AISI 304 stainless steel
- Total 30 disposable brush capacity
- Wall connection apparatus

Article Codes	L (mm)	W (mm)	H (mm)
SK20.00	250	120	400



SK10.10



SK10.15

Soap and Disinfectant Dispenser

SK10.10

- Photocell controlled
- Adjustable soap amount and long battery life with low energy consumption
- Hygienic anodized aluminium body
- Autoclavable pump system
- Wall connection apparatus

SK10.15

- Elbow controlled stainless steel handle
- Adjustable soap amount
- Wall connection apparatus

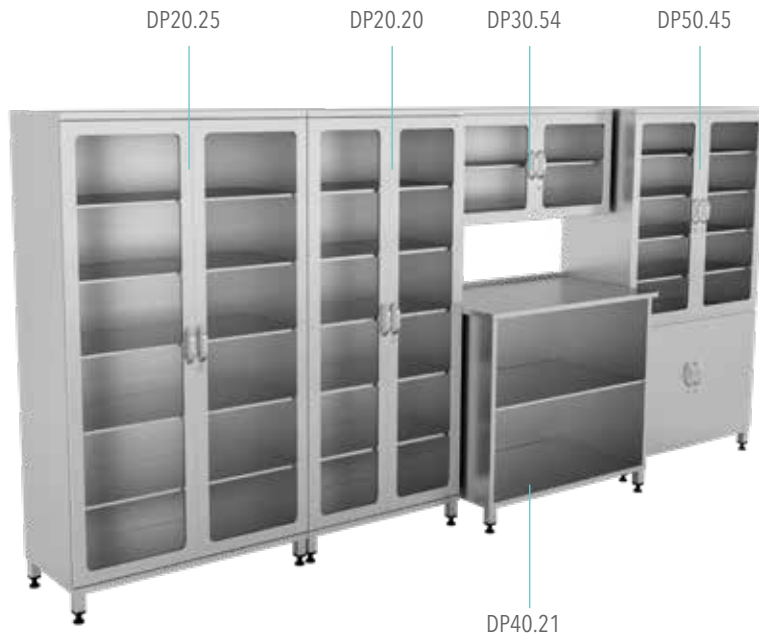
Article Codes	L (mm)	W (mm)	H (mm)
SK10.10	92	210	330
SK10.15	100	195	350



Paper Dispenser

- Made of AISI 304 stainless steel
- Paper case with lock

Article Codes	L (mm)	W (mm)	H (mm)
SK00.50	265	100	270



A.C; DP90.20

Configured Cabinets

- Made of AISI 304 stainless steel
- Configurable parts: Glass door tower cabinets, glass door wall mounted cabinet, preparation desk with shelf, glass & steel door tower cabinet.

Article Codes	L (mm)	W (mm)	H (mm)	Explanation
DP90.20	3800	750	1800	Complete set
DP20.25	1000	450	1800	Glass doors
DP20.20	800	450	1800	Glass doors
DP40.21	1000	600	850	Closed shelf
DP30.54	1000	350	500	Glass cover
DP50.45	1000	450	1800	Glass doors



A.C; DP90.10

Configured Cabinets

- Made of AISI 304 stainless steel
- Configurable parts: Glass door tower cabinets, glass door wall mounted cabinet, preparation desk with drawers

Article Codes	L (mm)	W (mm)	H (mm)	Explanation
DP90.10	1980	780	1800	Complete set
DP20.25 x 2pcs	1000	450	1800	Glass doors
DP30.54	1000	350	500	Glass cover
DP80.10	1000	600	850	Cabinet



Configured Cabinets

- Made of AISI 304 stainless steel
- Configurable parts: Glass door tower cabinets, glass door wall mounted cabinet, preparation desk with doors

Article Codes	L (mm)	W (mm)	H (mm)	Explanation
DP90.30	1800	600	1800	Complete set
DP40.15 x 2	1200	600	850	Cupboards
DP30.21 x 2	1200	350	500	Cabinet
DP50.75	500	450	1800	Glass doors



Configured Cabinets

- Made of AISI 304 stainless steel
- Configurable parts: Glass door tower cabinets, glass door wall mounted cabinet, preparation desk with drawers

Article Codes	L (mm)	W (mm)	H (mm)	Explanation
DP90.40	1800	600	1800	Complete set
DP80.10	1000	600	850	Cabinet
DP30.54	1000	350	500	Glass cover
DP50.45	1000	450	1800	Glass doors



A.C ; DP20.55

Medical Cabinets

- Made of AISI 304 stainless steel
- Doors with lock and handle
- Five adjustable shelves
- Adjustable rubber feet
- Easy to use sliding doors
- Glass side panels for easy monitoring

Article Codes	L (mm)	W (mm)	H (mm)	Explanation
DP20.15	1200	450	1800	Sliding doors
DP20.20	800	450	1800	Glass doors
DP20.25	1000	450	1800	Glass doors
DP20.35	1200	450	1800	Sliding doors
DP20.40	800	450	1800	Glass doors
DP20.45	1000	450	1800	Glass doors
DP20.55	1200	450	1800	Sliding doors
DP20.60	400	450	1800	Single doors
DP20.65	500	450	1800	Single doors



A.C ; DP20.15



A.C ; DP20.20
DP20.25



A.C ; DP20.35



A.C ; DP20.40
DP20.45



A.C ; DP20.60
DP20.65



A.C ; DP50.50
DP50.55

Medical Cabinets

- Made of AISI 304 stainless steel
- Cabinet with upper part with glass doors and glass sides, lower part with full doors
- Doors with lock and handle
- Upper part with four adjustable shelves
- Lower part with one fixed shelf
- Adjustable rubber feet

Article Codes	L (mm)	W (mm)	H (mm)	Explanation
DP50.15	1200	450	1800	Sliding doors
DP50.25	1200	450	1800	Sliding doors
DP50.30	800	450	1800	Full doors
DP50.35	1000	450	1800	Full doors
DP50.40	800	450	1800	Glass doors
DP50.45	1000	450	1800	Glass doors
DP50.10	1000	450	1800	With Drawer
DP50.20	1000	450	1800	With Drawer
DP50.50	800	450	1800	Glass doors
DP50.55	1000	450	1800	Glass doors
DP50.65	1200	450	1800	Sliding doors
DP50.70	400	450	1800	Single doors
DP50.75	500	450	1800	Single doors



A.C ; DP50.25



A.C ; DP50.35
DP50.30



A.C ; DP50.40
DP50.45



A.C ; DP50.10



A.C ; DP50.20



A.C ; DP50.15



A.C ; DP50.65



A.C ; DP50.70
DP50.75



Medical Cabinet

- Made of AISI 304 stainless steel
- Alternative types for different applications
- Adjustable rubber feet

Article Codes(mm) (LxHxU)	Closed shelf	Cupboards	Cabinet drawer	Sliding supboard	Profile footed	Open shelf	Sinks
600x600x850	DP40.14	DP40.13	-	-	MS10.40	MS10.30	-
800x600x850	DP40.20	DP40.10	-	-	MS10.41	MS10.31	-
1000x600x850	DP40.21	DP40.11	DP80.10	-	MS10.42	MS10.32	SK50.20 Single
1200x600x850	DP40.22	DP40.15	DP80.11	DP40.30	MS10.43	MS10.33	SK50.21 Single
1400x600x850	DP40.23	-	DP80.12	DP40.31	MS10.44	MS10.34	SK50.22 Double
1600x600x850		-	-	DP40.32	MS10.45	MS10.35	SK50.10 Double
1800x600x850		-	-	-	-	-	SK50.11 Double



Closed shelf



Cupboards



Cabinet drawer



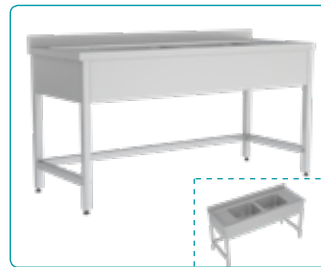
Sliding supboard



Profile footed



Open shelf



Sink double



Sink single

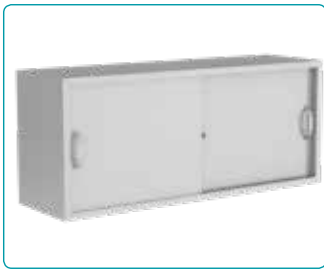
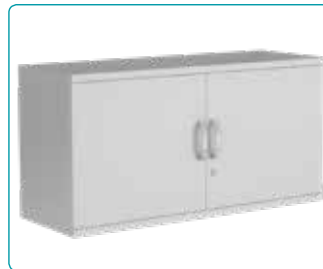


Glass cover

Wall Mounted Medical Cabinets

- Made of AISI 304 stainless steel
- Hanging cabinet
- Lockable sliding and standard door alternatives
- One shelf inside

Article Codes(mm) (LxHxU)	Sliding, without glass	Cupboards	Glass cover	Capless shelves	Sliding glass with cover
600x350x500	-	DP30.25	DP30.40	DP30.50	-
600x350x500	-	DP30.26	DP30.41	DP30.52	-
800x350x500	-	DP30.27	DP30.10	DP30.53	-
1000x350x500	-	DP30.28	DP30.11	DP30.54	-
1200x350x500	DP30.21	-	-	DP30.55	DP30.31

Sliding,
without glass

Cupboards



Glass cover



Capless shelves



Sliding glass with cover



Cabinet with Drawers

- Made of AISI 304 stainless steel and made of powder coated sheet steel alternatives
- Adjustable shelves and lockable glass doors
- Adjustable rubber feet
- In the full double cabinet, there are;
6 pcs ABS baskets in the dimensions of 600x400x200 mm
4 pcs ABS trays in the dimensions of 600x400x100mm
6 pcs ABS trays in the dimensions of 600x400x50mm
- Single, double door & transverse, longitudinal shelf arrangement options
- In the full single cabinet, there are;
3 pcs ABS baskets in the dimensions of 600x400x200 mm
4 pcs ABS trays in the dimensions of 600x400x100mm
4 pcs ABS trays in the dimensions of 600x400x50mm
- There is a shelf divider in each basket and tray which divides both horizontally and vertically.



Article Codes	L (mm)	W (mm)	H (mm)	Explanation (Double)
DP10.10	995	650	1800	Full, electrostatic paint
DP10.15	995	650	1800	Null, electrostatic paint
DP10.20	995	650	1800	Full, stainless steel
DP10.25	995	650	1800	Null, stainless steel
Article Codes	L (mm)	W (mm)	H (mm)	Explanation (Single)
DP10.30	715	450	1800	Full, electrostatic paint
DP10.35	715	450	1800	Null, electrostatic paint
DP10.40	715	450	1800	Full, stainless steel
DP10.45	715	450	1800	Null, stainless steel



Bronchoscope Endoscope Cabinet

- Made of AISI 304 stainless steel
- designed to keep the flexible endoscope systems safely
- Five-piece rail system for easy endoscope hanging
- Inner tray for water collecting
- Lockable glass door
- Adjustable rubber feet

Article Codes	L (mm)	W (mm)	H (mm)
DP10.50	665	471	2215



Cap, Bonnet and Mask Cabinet

- Made of AISI 304 stainless steel
- Designed to use at the entrance of operating rooms and ICU's
- Separate divisions for clean caps, bonnets, masks etc
- Wide vertically opened cabinet for used items
- Adjustable rubber feet

Article Codes	L (mm)	W (mm)	H (mm)
DP40.40	655	420	1560





Mobile Hook Rail, Orthopedic Type

Article Codes	Qty	Explanation
AB90.30	1	Complete set
AB90.10	1	Hook Trolley
RF40.30	1	Basket, Small
RF40.35	2	Basket, Large



Mobile Hook Rail, Anaesthetic Type

Article Codes	Qty	Explanation
AB90.40	1	Complete set
AB90.20	1	Hook Trolley
RF40.30	2	Basket, Small
RF40.35	4	Basket, Large



Mobile Hook Rail, Operating Type

Article Codes	Qty	Explanation
AB90.50	1	Complete set
AB90.10	1	Hook Trolley
RF00.30	1	Suture Tray
RF40.30	1	Basket, Small
RF40.35	1	Basket, Large
RF00.50	1	Multi-purpose Shelf



Wall Mounted Hook Rail, General Type

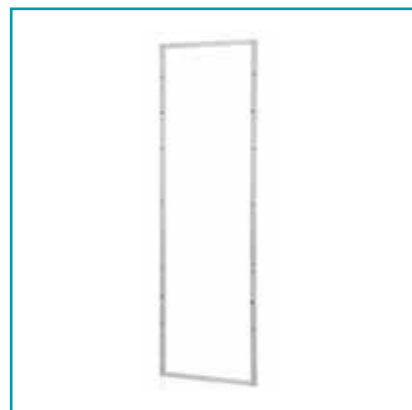
Article Codes	Qty	Explanation
RF10.50	1	Complete set
AB90.00	1	Hook Trolley
RF00.30	1	Suture Tray
RF40.30	1	Basket, Small
RF90.55	1	Medicine Box,
RF00.50	1	Multi-purpose Shelf



Double sided
Article Codes: AB90.10
600x850x 1700mm



Single sided
Article Codes: AB90.20
600x700x1700mm



Hook rail wall mounted
Article Codes: AB90.00
600x600x1700 mm



Sterile Goods Basket
Article Codes: RF40.30 Small
600x300x200 mm
Article Codes: RF40.35 Large
600x350x300 mm



Suture Storage
Article Codes: RF00.30
600x136x290 mm



Multi-purpose Barrier Storage
Article Codes: RF00.40
600x360x170 mm



Multi-purpose Storage
Article Codes: RF00.50
600x310x255 mm



Cap - Bonnet Storage
Article Codes: RF00.60
600x340x380mm



Shoe Holder
Article Codes: RF00.80
600x237x115 mm



Classic Shelves

- 5 pcs fixed flat shelves
- Shelves on 140 mm legs with level adjustment
- Made of AISI 304 stainless steel

Article Codes	L (mm)	W (mm)	H (mm)
RF10.70	600	500	1800
RF10.61	800	500	1800
RF10.71	1000	500	1800
RF10.72	1200	500	1800



Wire Shelves

- Designed to be used in operating theatres and sterilization departments
- Stainless steel shelf columns
- Four adjustable shelves
- Demountable
- Fixed and mobile options

Article Codes	L (mm)	W (mm)	H (mm)	Explanation
AB90.70	1220	460	1830	Fixed
AB90.71	1220	460	1830	Mobile
AB90.72	1520	460	1830	Fixed
AB90.73	1520	460	1830	Mobile
AB90.74	1220	610	1830	Fixed
AB90.75	1220	610	1830	Mobile
AB90.76	1520	610	1830	Fixed
AB90.77	1520	610	1830	Mobile



Stainless Steel Shelf

Article Codes	L (mm)	W (mm)	H (mm)	Explanation
AB90.80	1220	460	1830	Fixed
AB90.81	1220	460	1830	Mobile
AB90.82	1520	460	1830	Fixed
AB90.83	1520	460	1830	Mobile
AB90.84	1220	610	1830	Fixed
AB90.85	1220	610	1830	Mobile
AB90.86	1520	610	1830	Fixed
AB90.87	1520	610	1830	Mobile



Plastic Shelf

Article Codes	L (mm)	W (mm)	H (mm)	Explanation
RF10.80	1220	460	1830	Fixed
RF10.81	1220	460	1830	Mobile
RF10.82	1520	460	1830	Fixed
RF10.83	1520	460	1830	Mobile
RF10.84	1220	530	1830	Fixed
RF10.85	1220	530	1830	Mobile
RF10.86	1520	530	1830	Fixed
RF10.87	1520	530	1830	Mobile



Negatoscopes

- Fully LED panel for homogenous and bright illumination
- 9600 K color temperature for suitable viewing
- Slim design with only 45 mm thickness
- Single, double and triple banks are available

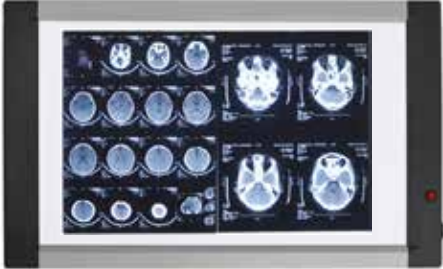
Article Codes	L (mm)	H (mm)	Explanation
NG10.00	495	510	Single
NG20.00	850	510	Double
NG30.00	1200	510	Triple

Electrical Properties:

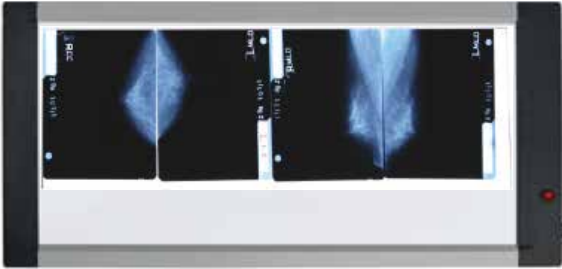
Brightness : 4500 cd/m2
Power Consumption : ≤ 30 W / bank
Input : 220-240 VAC
Light Uniformity : >90%
Color Temperature : >9600 K



NG10.00



NG20.00



NG30.00



Medicine Cabinets

- Made of AISI 304 stainless steel
- Digital lock
- Floor and wall mounted

Article Codes	L (mm)	W (mm)	H (mm)
DP70.10	210	270	300
DP70.11	300	300	600
DP70.12	500	300	600
DP70.13	800	500	1500



Digital Lock



Hanger Trolley

- Made of AISI 304 stainless steel
- Four castors, two of them with brake

Article Codes	L (mm)	W (mm)	H (mm)
AB90.15	1500	550	1700
AB90.12	1200	550	1700





SK80.71



SK80.70

Ultrasonic Cleaning Unit

- Made of AISI 304 stainless steel to be used in the decontamination areas of sterilization units of hospitals in line with user expectations
- One or two washing sinks depending on user requirements
- Ultrasonic washing section
- 3 cabinets with double doors each
- Faucets with hot & cold water connections for each sink
- Air/water gun with 8 different nozzles

Article Codes	L (mm)	W (mm)	H (mm)	Explanation
SK80.70	1800	600	900	Double sink
SK80.71	2700	600	900	Triple sink



Single Basket & Ultrasonic Washing Technology

- Effective cleaning by ultrasonic wave technology preventing deformation of micro instruments used during operation
- Wire basket with handle facilitating rinse of disinfectants on surgery instruments with its filtering function

Air/Water Gun System

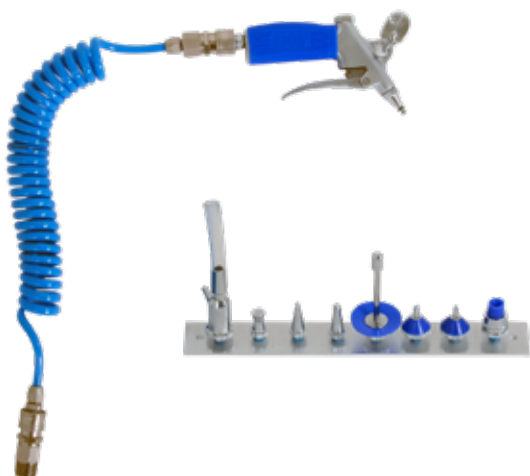
- Compressed air/water gun positioned at both sinks, enabling safe decontamination in lumen instruments used during operation



Ultrasonic Cleaning Unit

- Made of AISI 304 stainless steel
- 12 L capacity, table top system
- 200 W powerful ultrasonic system
- 500 W heater power
- Digital ultrasonic timer (0-100 min)
- Digitally controlled powerful heater system (max 100° C)
- Basket size: 260x200x160 mm

Article Codes	L (mm)	W (mm)	H (mm)	Explanation
SK80.73	310	250	420	Mobil



Comphressed Air and Water Gun

- For entire sterilization required centers
- Made from stainless material
- 8 different nozzle option
- Compression control from trigger

Article Codes
SK80.72



Lighted Inspection Table

- Made of AISI 304 stainless steel
- Designed to inspect sterile units
- Four pcs 75 mm castors two with brake and two electrically conductive

Article Codes	L (mm)	W (mm)	H (mm)
AB80.50	1400	600	850
AB80.51	1400	900	900



Plaster Table

- Made of AISI 304 stainless steel
- Sink with gypsum trap
- Sink dimension: 450x450x150 mm
- Upraised edge design to keep fluid in
- Water tap excluded
- Adjustable rubber feet

Article Codes	L (mm)	W (mm)	H (mm)
SK30.10	1650	600	850



Instrument Washing Sink

- Made of AISI 304 stainless steel
- Large sink design for easy washing
- 40 mm backside wall protection barrier
- Adjustable rubber feet

Article Codes	L (mm)	W (mm)	H (mm)
SK40.10	900	600	850
SK40.11	1400	600	850
SK40.12	1900	600	850



Baby Washing Table

- Made of AISI 304 stainless steel to be used in delivery services
- Two pieces independent faucets. One is photocell controlled and other one is manually controlled pull-out faucet
- Three drawers, one cabinet and two shelves
- Baby scale included
- Adjustable rubber feet

Article Codes	L (mm)	W (mm)	H (mm)
SK80.10	1650	650	1100



Endoscopy Washing and Storage Table

- Made of AISI 304 stainless steel
- Upraised edge design to protect the wall
- Pull out faucet for easy and detailed cleaning
- Four drawers and one cabinet
- Leakproof drawers for safe storage
- Adjustable rubber feet

Article Codes	L (mm)	W (mm)	H (mm)
SK80.15	1300	750	850



Falcate Table

- Made of 304 stainless steel for operating and intervention rooms
- Two shelves in shape of falcate
- Upper tray with barrier
- Six castors, three of them with brake

Article Codes	L (mm)	W (mm)	H (mm)
AB00.40	1700	450	1000



Packaging Table

- Made of AISI 304 quality stainless steel to be used in the decontamination areas of sterilization units
- Electrically adjustable table height
- 5 pcs electrical sockets
- LED lighting bar on top
- One drawer and one cabinet with door
- Two stainless steel wire baskets
- One folder holder
- Computer shelf
- Adjustable rubber feet

Article Codes	L (mm)	W (mm)	H (mm)
MS50.50	1500	700	2000



AB50.50

Packaging Table

- Made of AISI 304 stainless steel
- With drawer (AB50.50) and w/o drawer (AB90.90) models
- Smooth wide packing surface
- Single tray (AB50.50) and double tray (AB90.90) models
- Four pieces 125 mm castors, two of them with brake

Article Codes	L (mm)	W (mm)	H (mm)	Explanation
AB90.90	1525	810	865	Double tray, w/o drawer
AB50.50	1500	700	2000	Single tray, w drawer



AB90.90



Mayo Table

- Made of AISI 304 stainless steel
- Produced in accordance with international norms of hygiene, rounded concave corners, easy to clean, and bacteria free surface with press print
- Rotatable top tray independent of the foot section
- Two alternative models according to height adjustment system
- Mechanically controlled (MS10.50) by hand
- Hydraulic controlled by foot pedal
- Three pieces 75 mm castors two with brake, one electrically conductive

Article Codes	L (mm)	W (mm)	H (mm)	Explanation
MS10.50	540	740	970-1410	Mechanic
MS10.51	540	740	740-1130	Hydraulic



Surgical Instrument Cart

- Made of AISI 304 stainless steel
- 2 removable containers with lid. Large one 500x300x100 mm and small one 300x150x200 mm
- Easy to move by rigid handle
- Four pieces 75 mm castors two with brake, two electrically conductive

Article Codes	L (mm)	W (mm)	H (mm)
AB90.92	860	440	850



Paper Trolley

- Made of AISI 304 stainless steel
- Trolley for paper and fabric transportation and storage
- Four pieces 80 mm castors, two of them with brake

Article Codes	L (mm)	W (mm)	H (mm)
AB90.91	1100	500	1000



AB50.55

Open Trolley

- Main frame made of AISI 304 stainless steel
- Two alternative models:
Fixed stainless steel top shelf and 4 pcs adjustable
ABS trays (AB50.55) 5 pcs adjustable ABS trays (AB50.44)
- Four pieces 75 mm castors two with brake and two electrically conductive

Article Codes	L (mm)	W (mm)	H (mm)
AB50.44	870	450	700
AB50.55	870	450	680



AB50.44



Instrument Table

- Made of AISI 304 stainless steel
- Designed for operating and intervention rooms by considering user's expectations
- Upper tray with barrier on three sides
- Four pcs 75 mm castors two with brake and two electrically conductive

Article Codes	L (mm)	W (mm)	H (mm)	Explanation
AB61.90	900	650	870	With barrier
AB61.80	800	600	870	With barrier
AB61.70	700	550	870	With barrier
AB60.90	900	650	850	W/o barrier
AB60.80	800	600	850	W/o barrier
AB60.70	700	550	850	W/o barrier



AB62.20

Equipment Trolley

- Made of AISI 304 stainless steel
- Designed for operating and intervention rooms
- Easy to move by handles on both sides
- Bumpers on both castors
- Four castors, two of them with brake

Article Codes	L (mm)	W (mm)	H (mm)	Explanation
AB62.20	870	550	910	Double shelf
AB62.30	870	550	910	Triple shelf



AB62.30



Equipment Trolley

- Made of AISI 304 stainless steel
- Designed for operating and intervention rooms
- Transparent, integrated 6 fold medicine boxes on one side and ABS tray on other side
- Easy to move by handles on both sides
- Two shelves
- Bumpers on both castors
- Four castors, two of them with brake

Article Codes	L (mm)	W (mm)	H (mm)
AB62.10	870	550	910



- Back view



Instrument Table

- Made of AISI 304 stainless steel
- Designed for operating and intervention rooms
- Four pcs 75 mm castors two with brake and two electrically conductive
- Bumpers on both casters
- Curved corners

Article Codes	L (mm)	W (mm)	H (mm)
AB00.21	900	650	850
AB00.23	800	600	850
AB00.22	700	550	850



Nested Tables

- Made of AISI 304 stainless steel
- Nested type, space efficient storage
- Four pcs 75 mm castors two with brake and two electrically conductive

Article Codes	L (mm)	W (mm)	H (mm)
AB00.10	1100	550	1000
AB00.11	1000	500	950
AB00.12	900	450	900
AB00.13	800	400	850



AB70.20



AB70.30

Utility Cart

- Metal parts are made of electrostatic painted steel
- Shelves are made of MDF
- Four castors, two of them with brake
- Bumpers on both castors
- Easy to move by high handles on both sides

Article Codes	L (mm)	W (mm)	H (mm)	Explanation
AB70.20	910	530	900	Double shelf
AB70.30	910	530	900	Triple shelf



Laundry Trolley

- Metal parts are made of electrostatic painted steel
- Easy to install strong and large size bag
- Bumpers on both castors
- Easy to move by high handles on both sides
- Four castors, two of them with brake

Article Codes	L (mm)	W (mm)	H (mm)
AB75.05	910	530	900



Dressing Trolley

- Metal parts are made of electrostatic painted steel
- Two pieces wire baskets
- Bumpers on both castors
- Easy to move by metal handle
- Four castors, two of them with brake

Article Codes	L (mm)	W (mm)	H (mm)
AB75.15	880	460	860



Medical Waste Trolley

- Made of stainless steel to be used in operating and intervention rooms
- 345 L internal capacity with integrated relief valve at the bottom
- Two doors on top surface
- Four castors, two of them with brake

Article Codes	L (mm)	W (mm)	H (mm)
AB00.50	1225	610	960



Transportation Trolley

- Made of AISI 304 stainless steel
- Trolley for transportation of sterilization equipment
- 270° openable double wing doors
- Hermetic doors with silicone gasket and lock
- Two shelves inside
- Two maneuvering handles
- Four pcs 125 mm castors two with brake and two electrically conductive

Article Codes	L (mm)	W (mm)	H (mm)
AB90.95	960	680	1240
AB90.96	1260	680	1240



AB90.99

Housekeeping Trolley

- Made of AISI 304 stainless steel
- Single, double and triple options
- Metal foot pedals to open the lids
- Special clips for plastic bags
- Lid color options
- Four pcs 75 mm castors two with brake and two electrically conductive

Article Codes	L (mm)	W (mm)	H (mm)	Explanation
AB90.97	400	440	950	Single
AB90.98	700	440	950	Double
AB90.99	1000	440	950	Triple



AB90.98

Durable base tray to support the weight of larger bags



AB90.97

Single, double and triple basket alternatives are available for different departments of the hospital

Hygienic no-touch lid opening by foot pedal



Different lid color options for each basket



AB90.05

AB90.04

Bowl Stands

- Made of AISI 304 stainless steel
- Single and double bowl designs available
- Available with lower shelf
- Open frame design allows accessibility from any side
- Swivel castors
- Optional MR compatibility
- Four pcs 75 mm castors two with brake and two electrically conductive

Article Codes	L (mm)	W (mm)	H (mm)	Explanation
AB90.04	350	350	850	Single
AB90.05	350	700	850	Double



AB90.02

AB90.03

Waste Bins and Kick Bucket

- Made of AISI 304 stainless steel
- Lid and carriage handle (AB90.01, AB90.02)
- Rubber coated metal bumper against impacts
- Tip resistant
- Swivel castors
- Optional MR compatibility
- Four pcs 75 mm castors two with brake and two electrically conductive

Article Codes	L (mm)	H min (mm)	Explanation
AB90.01	350	350	20 L
AB90.02	530	530	50 L
AB90.03	400	200	Open



Transport Trolley

- Made of AISI 304 stainless steel
- Loading capacity 50 kg
- Trolley with maneuvering handle
- Four pcs 125 mm castors two with brake and two electrically conductive

Article Codes	L (mm)	W (mm)	H (mm)
AB90.93	1200	600	960
AB90.94	900	600	910



Instrument Table with Drawer

- Made of AISI 304 stainless steel
- One drawer and two shelves
- Both trays has barriers on three sides
- Bumpers on both casters
- Four pcs 75 mm castors two with brake and two electrically conductive

Article Codes	L (mm)	W (mm)	H (mm)
AB00.30	450	480	890



Inspital high technology minor surgery lights allow users to adjust light intensity and color temperature, to focus the light field. Hybrid Optical system can be adjusted by the autoclavable handle.

Minor Surgery Light

Light intensity	: Max 100,000 Lux at 1mt
CRI (Ra)	: 90
Colour Temperature	: 3,800 / 4,300 / 4,800K
Focus Diameter	: 18 ~ 30cm (circle)
Focal distance	: 1 mt
Head size	: 35 x 34 cm
Power consumption	: 25 W
Power input	: 100~250 Vac, 50 / 60Hz
LEDs	: 18
LED life span	: 50,000 hr (17yr : 8hr/day)

Power Supply

Voltage	: 220 / 230 / 240 VAC
UPS Type	: Line Interactive
Frequency [Battery Mode]	: 50 / 60 Hz \pm 1%
Working time	: 3 hours

Article Codes	L (mm)	H (mm)	Head
LP10.05	1260	1900	Down 40° Up 30°
LP10.00	125	320	Battery

Examination Table

- Made of AISI 304 Stainless steel main frame
- Antibacterial leather coated foam (32 density)
- Adjustable head section
- Foldable legs
- Adjustable rubber feet

Article Codes	L (mm)	W (mm)	H (mm)
SK00.62	1800	600	800



Hospital Screens

- 3-panel and 4-panel collapsible screens
- Mobile, easy to move system
- Electrostatic painted
- PVC and fabric panel options

Article Codes	L (mm)	W (mm)	H (mm)	Explanation
SK00.60	1860	380	1700	3 - panel-pvc
SK00.61	2500	380	1700	4 - panel-pvc
SK00.63	1860	380	1700	3 - panel-fabric
SK00.64	2500	380	1700	4 - panel-fabric



SK00.60



SK00.61



SR10.40



SR10.50

IV Stand

- Made of AISI 304 stainless steel
- Hook height can be adjusted between 1200-2100 mm
- Four hooks to hang IV
- Infusion devices mountable body structure
- Plastic and chrome plated star base options
- Star base with five castors, two with brake

Article Codes	L min (mm)	H min (mm)	H max (mm)
SR10.40	590	1200	2100
SR10.50	590	1200	2100



BS10.20

Surgeon Step Stool

- Made of AISI 304 stainless steel
- Non-slip, wide surface for easy use

Article Codes	L (mm)	W (mm)	H (mm)	Explanation
BS10.10	600	350	180	Single step
BS10.11	600	350	260	Single step
BS10.20	640	600	400	Double step

BS10.10
BS10.11



TB10.60



TB30.60 TB30.55 TB40.60 TB40.55

Hydraulic Stool

- Hydraulic height adjustment
- PU seat
- Reinforced and chrome plated star base options

Article Codes	L min (mm)	H min (mm)	H max (mm)	
TB10.60	590	470	600	Plastic base hand controlled
TB10.55	590	410	550	Plastic base hand controlled
TB20.60	590	470	600	Plastic base hand controlled
TB20.55	590	410	550	Plastic base hand controlled
TB30.60	590	470	600	Chromed base hand controlled
TB30.55	590	410	550	Chromed base hand controlled
TB40.60	590	470	600	Chromed base hand controlled
TB40.55	590	410	550	Chromed base hand controlled
TB50.70	590	490	700	Chromed base foot controlled
TB60.70	590	490	700	Chromed base foot controlled
TB70.70	590	490	700	Chromed base foot controlled
TB80.70	590	490	700	Chromed base foot controlled



TB10.55



TB20.60



TB20.55

SK00.20
SK00.21SK00.30
SK00.31

Kidney Trays and Bowls

- Made of AISI 304 stainless steel

Article Codes	L (mm)	W (mm)	H (mm)	Explanation
SK00.20	320	220	45	Tray with Lid
SK00.21	280	180	45	Tray with Lid

Article Codes	L (mm)	Explanation
SK00.30	250	Kidney Bowl Small
SK00.31	300	Kidney Bowl Large



Trommels

- Made of AISI 304 stainless steel
- Suitable for sterilization

Article Codes	L (mm)	H min (mm)
SK00.10	150	190
SK00.11	190	190
SK00.12	240	240
SK00.13	290	240
SK00.14	320	240
SK00.15	360	240
SK00.16	390	240



Waste Bin

- Made of AISI 304 stainless steel to be used in operation and intervention rooms
- Two way opened cover
- 11 L capacity and 48 L capacity options

Article Codes	L (mm)	W (mm)	H (mm)	Explanation
SK00.40	200	180	370	11 L
SK00.41	300	350	570	48 L



SK00.81



SK00.80

Pass Through Windows

- Tempered glass
- Adjustable width according to wall thickness

Article Codes	L (mm)	H min (mm)	Explanation
SK00.80	880	950	Double window
SK00.81	800	950	Single window



Cylinder Trolley

- Made of AISI 304 stainless steel
- Suitable for 10 L cylinders
- Single and double cylinders options
- Fixing belt for each cylinders
- Bumpers on each castors
- Four pieces 75 mm castors, two of them with brake

Article Codes	L min (mm)	H min (mm)	H max (mm)	Explanation
SK00.70	590	410	850	Double
SK00.71	350	410	850	Single



UV Germicidal Lamps

System disinfects the air by the UV germicidal lamp located in the disinfection chamber. It takes the contaminated air on one side and gives the purified air on other side. Models with external UV lamp provides a wider range of effective area.

Supply Voltage	:230 V, 50 Hz
Power consumption	:115 W
Lamp Type	:2x55 W / 2x30 W
Useful lifetime of the bulb	:Min 8000 h
Lamp weight type	:8,5 Kg
Made of AISI 304 stainless steel	

Article Codes	L (mm)	W (mm)	H (mm)	Explanation
LP20.55	1112	135	210	55 W
LP20.30	1112	135	210	30 W
LP40.55	1112	135	210	Ext. UV Lamp, 55 W
LP40.30	1112	135	210	Ext. UV Lamp, 30 W



Slipper Trolley

- Made of AISI 304 stainless steel
- Four pieces 75 mm castors two with brake and two electrically conductive
- 24 pairs of slipper capacity
- Four castors, two of them with brake

Article Codes	L (mm)	W (mm)	H (mm)
RF10.60	995	565	1825

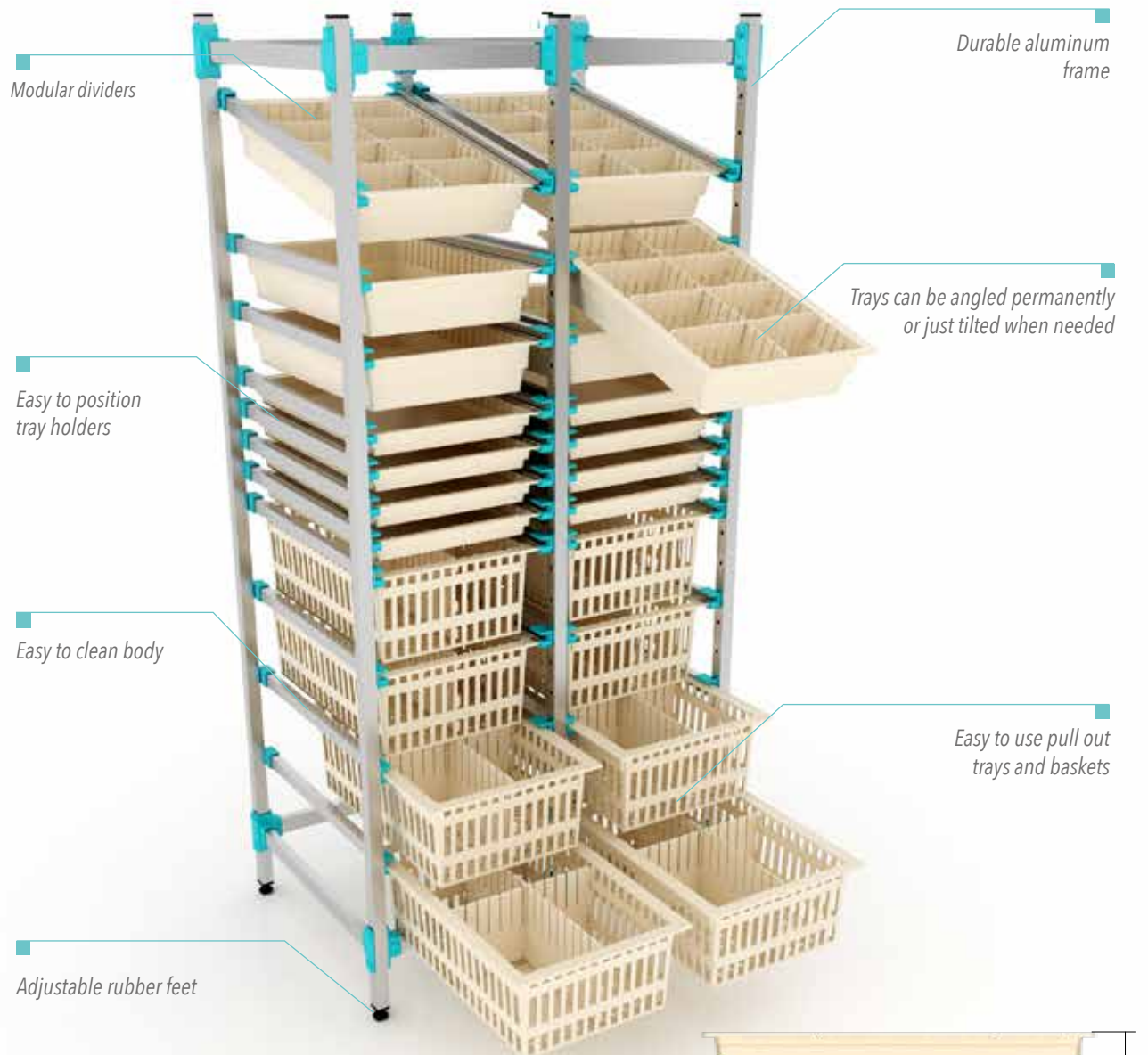


Sitover Bench

- Made of AISI 304 stainless steel
- Cabinet for shoes
- Level adjustment rubber feet
- Modular

Article Codes	L (mm)	W (mm)	H (mm)	Explanation
DP60.04	600	400	600	4 pairs
DP60.06	850	400	600	6 pairs
DP60.08	1100	400	600	8 pairs
DP60.10	1350	400	600	10 pairs

High Density and Long Span Shelving



- High density storage
- Adjustable tray rails
- Expandable durable aluminum frame
- Horizontal and angled tray positioning
- Long edge or short edge models are available



3 size options for trays & baskets (50, 100 and 200 mm)

HIGH EFFICIENCY IN SUPPLY STORAGE

Inspiral shelving systems can be configured to fulfill user need. There are multiple size and type options as well as long edge and short edge orientation alternatives.

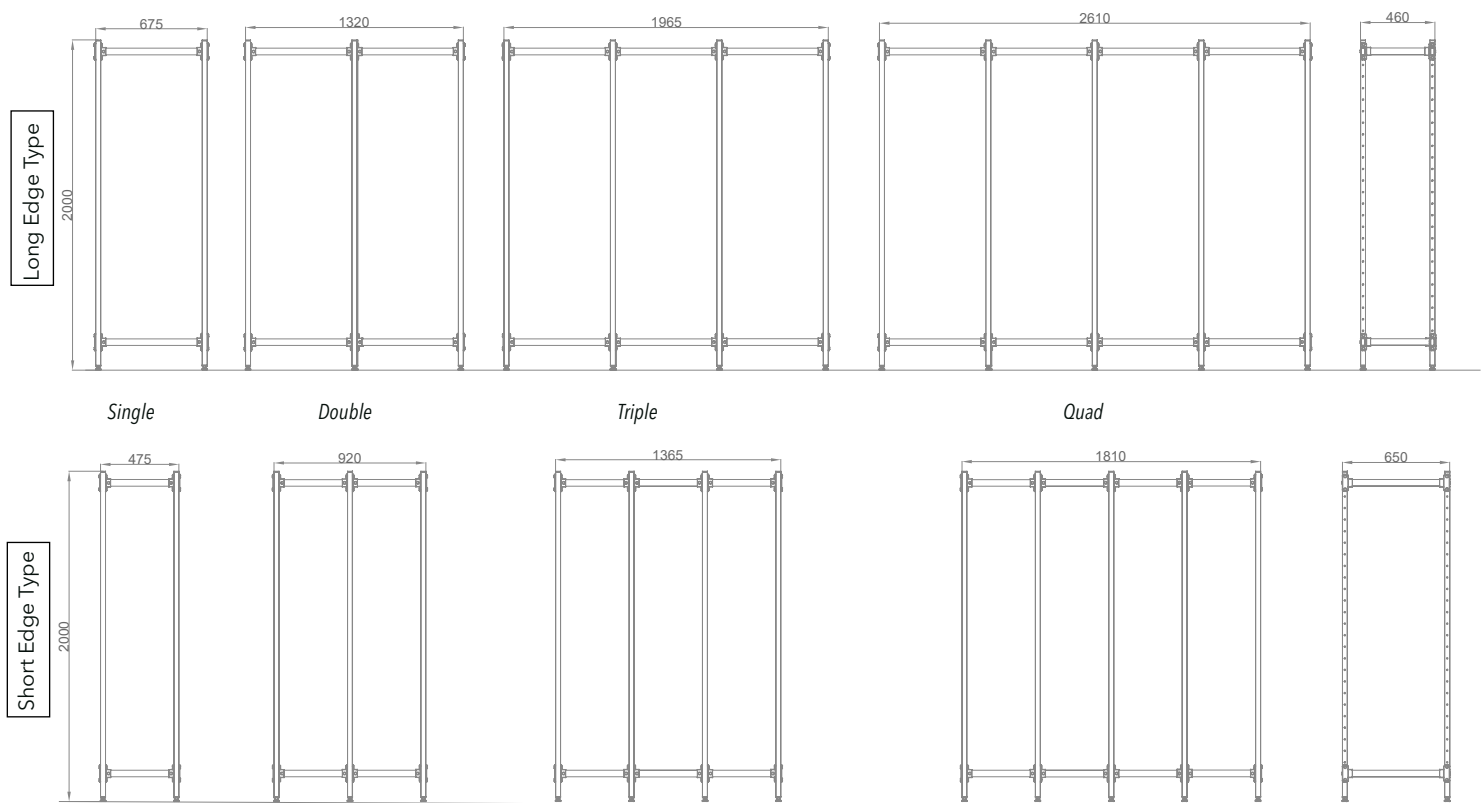


Short Edge Type



Long Edge Type

STAINLESS STEEL HOSPITAL FURNITURE

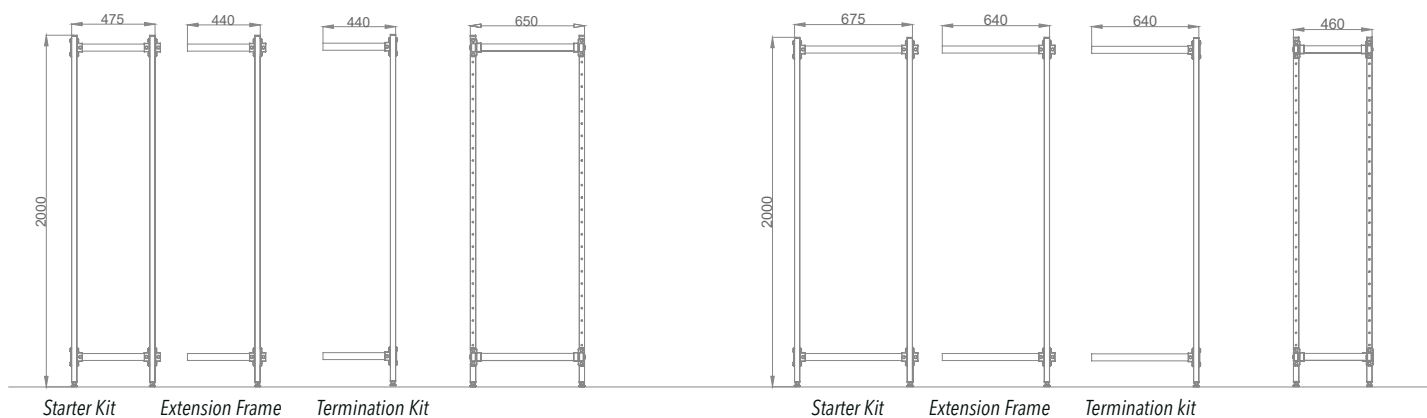


Short Edge Type

Article Codes	L (mm)	W (mm)	H (mm)	Explanation
RF00.91	475	650	2000	Single
RF00.92	920	650	2000	Double
RF00.93	1365	650	2000	Triple
RF00.94	1810	650	2000	Quad

Long Edge Type

Article Codes	L (mm)	W (mm)	H (mm)	Explanation
RF10.91	675	460	2000	Single
RF10.92	1320	460	2000	Double
RF10.93	1965	460	2000	Triple
RF10.94	2610	460	2000	Quad



Short Edge Type

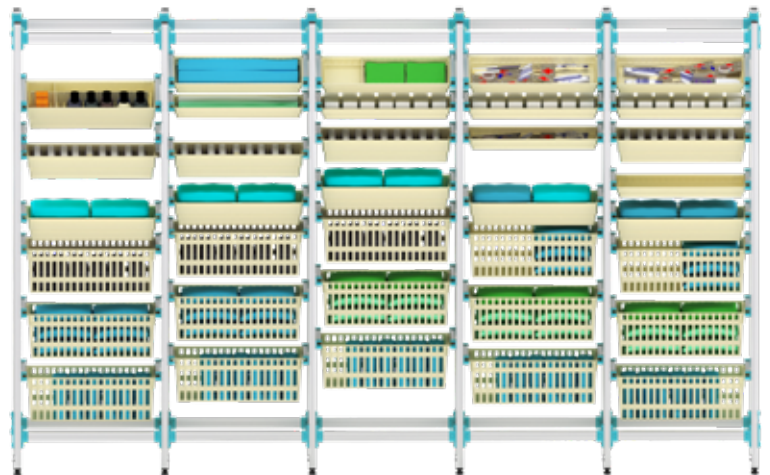
Article Codes	L (mm)	W (mm)	H (mm)	Explanation
RF00.25	675	650	2000	Starter Kit
RF00.26	1375	650	2000	Extension Frame
RF00.27	1965	650	2000	Termination Kit

Long Edge Type

Article Codes	L (mm)	W (mm)	H (mm)	Explanation
RF10.25	675	460	2000	Starter Kit
RF10.26	640	460	2000	Extension Frame
RF10.27	1965	460	2000	Termination Kit



- Inspital shelving systems provides 30% to 45% more efficient space in storage area
- Finding the correct supplies in Inspital shelving system is much easier compared with classical bulk storage
- Clear line of sight enables users to reach correct supply in shorter time
- Fully retractable baskets and trays enables easy access to desired supply with less effort
- Shelving system can be easily extended by adding extension frames according to storage room architecture





ABS Tray and Dividers

- Euro Tray 600 x 400 mm
- Available in 50mm, 100 mm and 200mm heights
- Suitable for high temperature washing
- Hygienic, easy to clean design
- Reconfigurable dividers
- Carrying capacity of 30 kgs



Tray, 50 mm

Article Codes	L (mm)	W (mm)	H (mm)	Explanation
RF30.05	600	400	50	ABS
RF31.05	600	400	50	Antibacterial



Tray, 100 mm

Article Codes	L (mm)	W (mm)	H (mm)	Explanation
RF30.10	600	400	100	ABS
RF31.10	600	400	100	Antibacterial



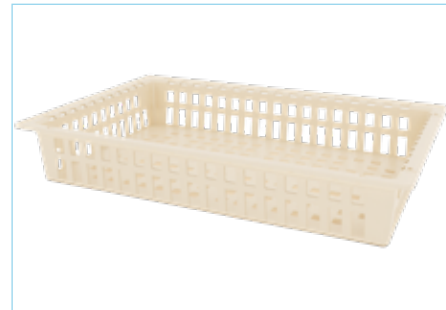
Tray, 200 mm

Article Codes	L (mm)	W (mm)	H (mm)	Explanation
RF30.20	600	400	200	ABS
RF31.20	600	400	200	Antibacterial



Basket, 50 mm

Article Codes	L (mm)	W (mm)	H (mm)	Explanation
RF20.05	600	400	50	ABS
RF21.05	600	400	50	Antibacterial



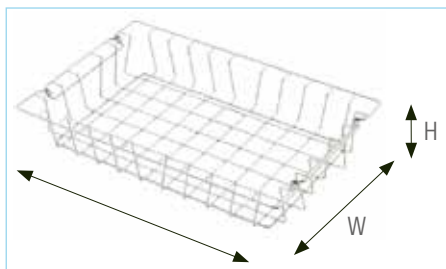
Basket, 100 mm

Article Codes	L (mm)	W (mm)	H (mm)	Explanation
RF20.10	600	400	100	ABS
RF21.10	600	400	100	Antibacterial

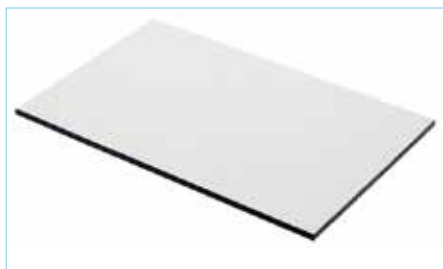


Basket, 200 mm

Article Codes	L (mm)	W (mm)	H (mm)	Explanation
RF20.20	600	400	200	ABS
RF21.20	600	400	200	Antibacterial

**Wire Basket**

Article Codes	L (mm)	W (mm)	H (mm)	Explanation
RF40.05	600	400	50	S. Steel
RF40.10	600	400	100	S. Steel
RF40.20	600	400	200	S. Steel

**Compact Shelf**

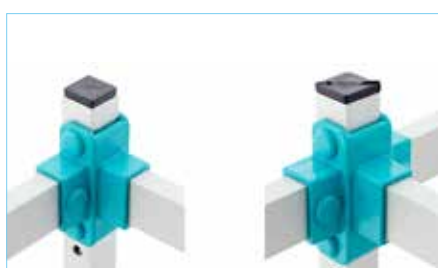
Article Codes	L (mm)	W (mm)	H (mm)	Explanation
RF45.10	600	400	10	Compact

**Short and Long Dividers**

Article Codes	L (mm)	W (mm)	Explanation
RF60.05	400	50	ABS
RF60.10	400	100	ABS
RF60.20	400	200	ABS
RF61.05	600	50	ABS
RF61.10	600	100	ABS
RF61.20	600	200	ABS
RF62.05	400	50	Antibacterial
RF62.10	400	100	Antibacterial
RF62.20	400	200	Antibacterial
RF63.05	600	50	Antibacterial
RF63.10	600	100	Antibacterial
RF63.20	600	200	Antibacterial

**Shelf Rail**

Article Codes	L (mm)	W (mm)	Explanation
RF50.95	695	30	Long (Angle)
RF50.20	620	30	Long (Flat)
RF55.95	495	30	Short (Angle)
RF55.20	420	30	Short (Flat)

**Shelf Connection Part and Profile Clamp**

Article Codes	Explanation
RF01.22	2s, 3 screwed
RF01.33	3s, 4 screwed
RF05.05	Profile clamp

**Castor**

Article Codes	H (mm)	Explanation
AT10.75	75	With brake
AT20.75	75	Without brake

**Adjustable Rubber Foot**

Article Codes	Explanation
RF30.30	30x30 mm



Short Edge Type, 400 mm



Long Edge Type, 600 mm



Side Panel

Article Codes	L (mm)	W (mm)	Explanation
RF80.40	400	600	Short, ABS
RF80.60	600	400	Long, ABS
RF81.40	400	600	Short, polycarbonate
RF81.60	600	400	Long, polycarbonate
RF82.40	400	600	Short, antibacterial
RF82.60	600	400	Long, antibacterial

- Slide panels can be used in 400 mm and 600 mm cabinets
- Trays and baskets can be loaded in horizontal or angled way
- Brake hatches stops the trays to avoid falling
- Multiple panels can be used depending on the size of cabinet



Medication Drawers

Article Codes	L (mm)	W (mm)	H (mm)	Explanation
RF70.80	338	79	80	Shelf
RF70.20	338	79	120	Shelf
RF71.80	-	-	80	Divider
RF71.20	-	-	120	Divider



Medicine Box

Article Codes	L (mm)	W (mm)	H (mm)	Explanation
RF90.04	600	168	206	Four
RF90.05	600	133	165	Five
RF90.06	600	92	114	Six



Labelling Options

Article Codes	Explanation
RF01.00	Label of 100
RF01.01	Intermediate label
RF01.02	Outer label



Morgue Unit

- Double drawers
- Side way loading
- Made of AISI 304 stainless steel

Temperature Scale	: -5/+10°C
Operation Temperature	: +2/+4°C
Power	: 800-1600 W
Illumination	: 36 W floresan
Defrost	: Full automatic
Air Flow	: Fan controlled
Temperature Isolation	: PU isolation
Voltage	: 220-240 V/50-60 Hz

Article Codes	L (mm)	W (mm)	H (mm)	Explanation
MG40.10	2400	800	1000+350	Single
MG40.20	2400	800	1600+350	Double



MG50.30



MG50.20



Morgue Unit

- Double drawers
- Front way loading
- Made of AISI 304 stainless steel

Temperature Scale	: -5/+10°C
Operation Temperature	: +2/+4°C
Power	: 800-1600 W
Illumination	: 36 W floresan
Defrost	: Full automatic
Air Flow	: Fan controlled
Temperature Isolation	: PU isolation
Voltage	: 220-240 V/50-60 Hz

Article Codes	L (mm)	W (mm)	H (mm)	Explanation
MG50.20	2400	800	1600+350	Double
MG50.30	2400	800	2200+350	Triple

Body Washing Table

- Made of AISI 304 stainless steel
- Top tray is designed for easy draining
- Cabinet with door on the leg part

Article Codes	L (mm)	W (mm)	H (mm)
MG60.10	2000	900	920



Autopsy Table

- Made of AISI 304 stainless steel
- Vacuum system operates with water
- Compressed air and water spray gun
- Garbage grinder (optional)
- Two integrated electric sockets

Article Codes	L (mm)	W (mm)	H (mm)
MG70.10	2800	900	900





Rotating Autopsy Table

- Made of AISI 304 stainless steel
- Shower and washing unit.
- Fixed base and 350° rotatable corpse tray

Article Codes	L (mm)	W (mm)	H (mm)
MG80.10	2250	1000	850



Lift for Morgue

- Made of AISI 304 stainless steel
- Designed to lift the corpse to 2nd and 3rd floor cells
- Designed to be easily guided by pushing handle.
- Four pcs 125 mm castors two brake
- Manual hydraulic lift system

Article Codes	L (mm)	W (mm)	H (mm)
MG90.10	2100	700	350-1750

INSPIRAL

Turkey Factory

Karaođlan Mahallesi Kme Evleri
No. 745 Glbesi /
ANKARA, TRKİYE
Tel: +90 312 619 02 22
Fax: +90 312 619 02 25
www.inspital.com.tr
info@inspital.com

İstanbul Region Hq

Oru Reis Mah. Tekstilkent Cad.
Tekstilkent Ticaret Merkezi
10/AN NO: 209 (A7 BLOK NO:19)
Esenler-İSTANBUL, TRKİYE

Germany Hq

Kalkumer Str.125
40468 Dsseldorf
Tel: +49 211 680 20 53-54
Fax: +49 211 680 20 55