

OP - 2P

OPERATING TABLES

ELECTRICAL MOVEMENTS

- Height
- Back Rest
- Trendelenburg
- Reverse Trendelenburg
- Lateral Tilt
- Sliding

MECHANICAL MOVEMENTS

- Head Rest
- Kidney Surgery Position
- Leg Rests, Up / Down
- Leg Rests, Right / Left
- Central Locking

SIZES

- WidthxLength : 610x2130 mm (2P)
- : 610x2040 mm (2V)
- Height (min) : 800 mm (2P) | 830 mm (2V)
- Height (max) : 1200 mm (2P) | 1230 mm (2V)
- *Max. & min. dimensions are measured with mattress.

Üzümcü OP-2P operating tables are designs which can be adjusted to get positions suitable for carrying out all surgical operations, produced by considering the patient and user requirements and maximize the operational efficiency.

Safe patient positioning



2 sections back rest
remote control
with kidney elevation

Rapid mobilization

Conductive castors
with central locking
system



OPERATING TABLES

OP - 2V

ANGLES

• Sliding Movement	: 300 mm	• Leg Rest Up / Down	: +65°/-90°
• Lateral Tilt Movement	: +20°/- 20°	• Leg Rest Parallel Movement	: 80°
• Back Rest Movement	: +90°/- 40°	• Head Rest Movement	: +30° / - 60°
• Trendelenburg	: +25°	• Kidney Surgery Position	: 250°
• Reverse Trendelenburg	: -25°	• Reverse Trendelenburg	: -25°
		• Flex / Reflex Position	: +220° / -90°

The optional patient heating system of the OP-2V table enables to keep the patient's heat stable with 0.1°C accuracy. The system shows measured and set temperatures on a LCD display at the same time. The heating device has an advanced alarm and safety system.

Three layers visco mattress
for ensuring patients comfort



Positioning with hand, body
and remote control.

Telescopic height
adjustment



Patient heating system



OM - 6N

OPERATING TABLES

ELECTRICAL MOVEMENTS	MECHANICAL MOVEMENTS	SIZES
• Height	• Head Rest	• Width x Length : 610x2200 mm (6N)
• Back Rest	• Kidney Surgery Position	: 780x2140 mm (6L)
• Trendelenburg	• Leg Rests, Up / Down	• Height (min) : 800 mm (6N) 820 mm (6L)
• Reverse Trendelenburg	• Leg Rests, Right / Left	• Height (max) : 1200 mm (6N) 1220 mm (6L)
• Lateral Tilt	• Central Locking	*Max. & min. dimensions are measured with mattress.
• Sliding		



OPERATING TABLES

OM - 6L

ANGLES

• Sliding Movement	: 300 mm (6N)	• Leg Rest Up/Down	: +65°/-85°
• Lateral Tilt Movement	: +20°/-20° (6N)	• Leg Rest Parallel Movement	: 90° (6N) 80° (6L)
	+30°/-30° (6L)	• Head Rest Movement	: +35°/-80° (6N) +35°/-60° (6L)
• Back Rest Movement	: +90°/-40°	• Kidney Surgery Position	: 250°
• Trendelenburg	: +25°	• Flex/Reflex Position	: 210° / 115° (6N) 220°/90° (6L)
• Reverse Trendelenburg	: -25°		



OPERATING TABLES



Functional Design & Wide Range of Accessory Options

- Modular design taking shape by different surgical operations with high stability
- Solutions ensuring to reach the position required by any kind of surgical operations
- with its wide range of accessory options
- Telescopic body specifications enabling height adjustment at different levels
- Wheel system which is made of ABS plastic, with high multi-directional mobility and 125 mm in diameter (OP Series)



Sliding

- Image reception ability in a wide area without disturbing the sterile environment with the fluoroscopy device by its sliding feature within 300 mm on horizontal plane



Optimal Clearance In Surgical Area

- Maximum surgical area visibility with its kidney elevator, integrated on the table and adjustable up to 300° (120 mm)



Different Mattress Options

- Compact material table top with high X-ray permeability that allows high-quality image reception
- Visco or polyurethane mattress options that ensure the patient's comfort by taking its body shape, thus preventing decubitus prophylaxis
- Advanced hygiene conditions thanks to compact material base with polyurethane moulding.



Modular Design

- Design that can get different angles according to the type of surgery, demountable head and foot plates
- Unlimited perineal accessibility with demountable foot plate



Easy Approach for C-Arm

- Complete access to all table areas and its X-ray permeable table top allow high image quality
- Suitable base structure for easy access and approach of the C-arm scopy and surgical microscopes



Accessory Positioning and Battery System

- Stainless steel rail attachment system integrated on both sides of the table, enabling accessory mounting without removing existing accessories
- Possibility of positioning the table in case of electricity cuts thanks to the rechargeable battery system that guarantees thirty movements



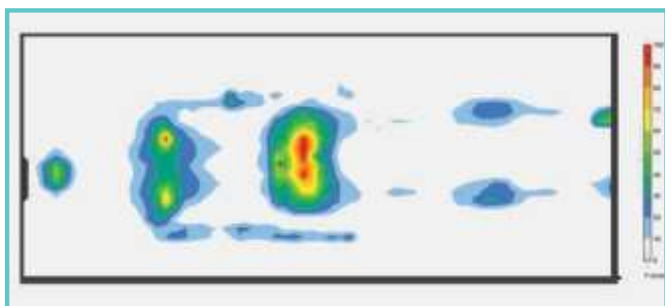
T-Base Specifications

- T-Base enables table optimal approach for the surgical team and equipment
- 316 quality stainless steel body resistant to fractures and corrosion
- Silent and nonvibrating operation



Multi Control System

- Multi control system with hand set and body control panel
- Rapid recall in case of need by storing five different surgery positions
- Position reset by a single button
- Easy use in endosurgery operations thanks to the illuminated screen



Optimum Mattress Performance

- Uzumcu operating table mattresses are designed and manufactured according to the Pressure Mapping test results. These tests are performed in house test systems in Uzumcu factory.

OM-2M

OPERATING TABLES

MECHANICAL MOVEMENTS

- Height Adjustment
- Back Rest
- Trendelenburg
- Reverse Trendelenburg
- Lateral Tilt Movement
- Head Rest Movement
- Leg Rests, Up / Down
- Leg Rests, Right / Left

SIZES

- Width x Length : 610 x 2150 mm
- Height (min) : 735 mm
- Height (max) : 985 mm

*Max. & min. dimensions are measured with mattress.



Üzümçü OM-2M table offers suitable solutions for every surgery type and budget. It is a an easy to use model, durable, cost efficient, and enables all positions mechanically.



OPERATING TABLES

OM-2M

ANGLES

• Lateral Tilt Movement	: +30°/- 30°	• Leg Rest Up/Down	: +60°/-85°
• Back Rest Movement	: +70°/- 35°	• Leg Rest Parallel Movement	: 90°
• Trendelenburg	: +20°	• Head Rest Movement	: +35° / -80°
• Reverse Trendelenburg	: -25°	• Flex/Reflex	: 215°/110°



Functional Design & Wide Range of Accessory Options

- Highly stable modular design adaptable for different surgical positions
- Adaptable solutions with its wide range of accessories that permit to reach any required surgical position
- Telescopic body enabling height adjustment at different levels



Easy Access Positioning Arms

- Trendelenburg/reverse trendelenburg and spine positioning arms that are easily accessible by the surgery team



Table Top Specifications and Lateral Use

- Cleanability and sterilizability suitable for decontamination with its seamless structure and demountability
- High-quality image reception thanks to its highly X-ray-permeable compact material table top
- Right-left lateral tilt arm easy to use and integrated with the operation table. It enables mobility for the surgery team and can be hidden under the table sitting plate when is not being used



T-Base Specifications

- The T-Base enables optimal approach of surgery team and equipment to the table
- 316 quality stainless steel body resistant to fractures and corrosion
- Silent and non-vibrating operation



Breaking System & Hydraulic Lever

- Wheel system enabling mobility in the operation room
- The brake system enables stable positioning
- Its telescopic body's height can be adjusted at any required level by the hydraulic pedal

OPERATING TABLES



▼ Trendelenburg Position



▼ Reverse Trendelenburg Position



▼ Left Lateral Tilt Position



▼ Right Lateral Tilt Position



▼ Reflex Position



▼ Flex Position



▼ Chest (Breast) Surgery Position



▼ Struma Surgery Position



▼ Bariatric Laparoscopic Surgery Position



▼ Anaesthesia Preparation and General Surgery Position



▼ Chest Surgery Position



▼ Kidney, Sternum Surgery Position



Kidney Surgery Position



Gynecologic and Urologic Surgery Position



Gynecologic, Urologic, Colorectal Surgery Position



Spinal, Proctologic Surgery Position



Spinal Surgery Position



Neurosurgery Position



Neurosurgery Position



Neurosurgery Position



Arthroscopic Knee Surgery Position



Meniscus Surgery Position



Orthopedic Fracture Surgery Position



Ophthalmology Position

OPERATING TABLE ACCESSORIES



OM-520 Orthopedic Traction Set

Orthopedic traction set is suitable for use with all Uzumcu operating tables in orthopedic surgeries..

- Made of 304 quality stainless steel
- Leg strainer function by mechanical lever
- Traction boots with up & down movement and rotation capability around its own axis

A.C: 11.1042



OM-285 Neurosurgery Head Rest with Pin & Horseshoe Head Rest

Neurosurgery head rest especially designed for use in neurosurgery operationsr.

- Extremely durable and rigid construction from aluminum alloy
- 3 pcs fixing system with pins and completely adjustable skull clamps
- Adjustment mechanism from 4 different points
- Easily mountable horse shoe head rest accessory

A.C: 11.1034





OM-340 Arthroscopy Shoulder Support

Designed for use in arthroscopy operations and suitable for use with all Opera tables

- 7 stage back rest adjustment
- Head fixing section with up & down movement
- Special design offering easy reach to shoulder area
- Body fixing strap

A.C: 11.1146



OM-600 Leg Positioning Boot

An accessory designed for use in branches that require leg positioning

- Positioning system with one hand control and self-brakes
- Special booths for foot comfort

A.C: 11.1063



OPERATING TABLE ACCESSORIES



OM-120 Arm Support
OM-152 Hand-Wrist Strap

A.C.: 11.1020
A.C.: 11.1023



OM-100 Anaesthesia Screen

A.C.: 11.1018



OM-110 IV Stand

A.C.: 11.1019



OM-150 Body Strap

A.C.: 11.1021



OM-220 Geopel Knee Crutch (Pair)

A.C.: 11.1030



OM-380 Irrigation Bowl

A.C.: 11.1032



OM-300 Croos Bar

A.C.: 11.1035



OM-405 Clamp

A.C.: 11.1105



OM-390 Clamp

A.C.: 11.1027



OM-355 Carbonfiber Extension Board A.C.: 11.1147



OM-135 Shoulder/Lateral Support



S.K.: 11.1152



OM-200 Foot Support (Pair)

A.C.: 11.1026



OM-310 Proctological Accessories

A.C.: 11.1033



OM-155 Foot-Wrist Strap

A.C.: 11.1024



OM-255 Extention Leg Plate (Single)

A.C.: 11.1039



OM-330 X-Ray Cassette Holder

A.C.: 11.1040



OM-995 Accessory Trolley

A.C.: 11.1148

OPERATING TABLE ACCESSORIES



OM-240 Knee Arthroscopy Support A.C.: 11.1037



OM-250 Meniscus Positioning Roll A.C.: 11.1038



OM-365 Arm Surgery Plate A.C.: 10.1041



OM-550 Orthopedic Traction Set Accessory Trolley A.C.: 11.1044



OM-270 Ophthalmologic Head Support A.C.: 11.1036



OM-275 Weinberger Hand Traction Set S.K.: 11.1151



OM-446 Spinal Surgery Cushion with Silicone A.C.: 11.1103



OM-460 Mattress, Adult, Gel A.C.: 11.1050
OM-450 Mattress, Pediatric, Gel A.C.: 11.1107



OM-430 Head Rest, Gel
OM-432 Head Rest, Gel, Pediatric

A.C.: 11.1012
A.C.: 11.1013



OM-431 Head Rest, Polyurethane
OM-433 Head Rest, Pediatric, Polyurethane

A.C.: 11.1142
A.C.: 11.1143



OM-415 Prone Head Support

A.C.: 11.1102



OM-410 Horseshoe Head Rest, Gel
OM-412 Horseshoe Head Rest, Gel, Pediatric

A.C.: 11.1007
A.C.: 11.1008



OM-411 Horseshoe Head Rest, Polyurethane
OM-413 Horseshoe Head Rest, Pediatric,
Polyurethane

A.C.: 11.1139
A.C.: 11.1140



OM-420 Arm Rest, Gel

A.C.: 11.1009



OM-440 Chest Cushion, Gel
OM-442 Chest Cushion, Geli Pediatric*

A.C.: 11.1014
A.C.: 11.1015



OM-441 Chest Cushion, Polyurethane

A.C.: 11.1144



OM-425 Heel Rest, Gel

A.C.: 11.1010



OM-428 Foot Wrist Rest, Gel

A.C.: 11.1011



OM-429 Foot Wrist Rest, Polyurethane

A.C.: 11.1141



OM-445 Silicon Lateral
Position Support

A.C.: 11.1016

XT-15

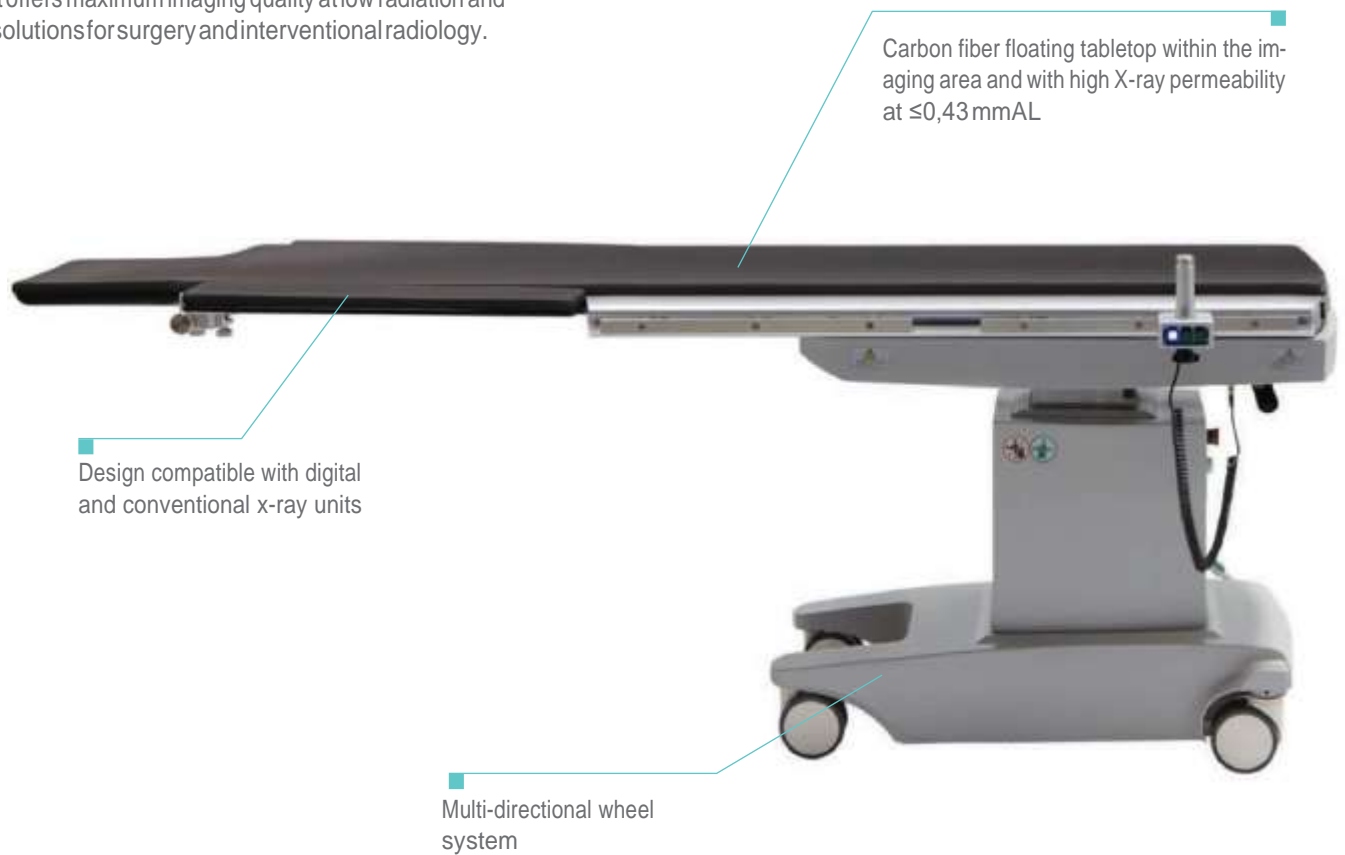
MECHANICAL MOVEMENTS

- Height
- Multifunctional Table Top Slide
- Central Locking

SIZES

- WidthxLength : 465x2450mm
- Height (min) : 845mm
- Height (max) : 1105mm

Üzümçü XT-15 imaging tables are designed to enable excellent C-arm accessibility with its carbon fiber top tray. It offers maximum imaging quality at low radiation and solutions for surgery and interventional radiology.



C-ARM IMAGING TABLE

TABLE TOP MOVEMENTS

- | | |
|---------------------|----------|
| • XAxis Movement | : 820 mm |
| • YAxis Movement | : 220 mm |
| • Vertical Movement | : 275 mm |

Its 1100 mm carbon fiber tabletop enables various patient positions and low X-Ray absorption for clear imaging. This helps to extend the lifetime of the X-Ray machine Spheroid's tube.



The hand control unit enables height adjustment and bidirectional floating movements along the X and Y axis.



JM-5F / JM-4F

ELECTRICAL MOVEMENTS

- Height : 720 - 970 mm
- Back Rest : 50°
- Trendelenburg : 25°

SIZES

- WidthxLength : 630x1700mm
- Height (min) : 720 mm
- Height (max) : 970 mm

Üzümcü JM-5F Gynecological Table is a model suitable for any kind of gynecological examination and surgery. It offers different mattress color options.



GYNECOLOGICAL TABLE



JM-4F

A.C.: 11.1047



JM-BD

A.C.: 11.1049



JM-TD

A.C.: 11.1048



Waste Collection

- Sustainable hygiene conditions with waste collection system, which is easy to clean and disinfect thanks to the round concave structure



Hygiene

- Roll cover dispenser at spine plate for patient's comfort and hygiene requirement



Comfort

- Table extension which is integrated within the sitting plate frame and moveable by telescopic rail system in case of need

